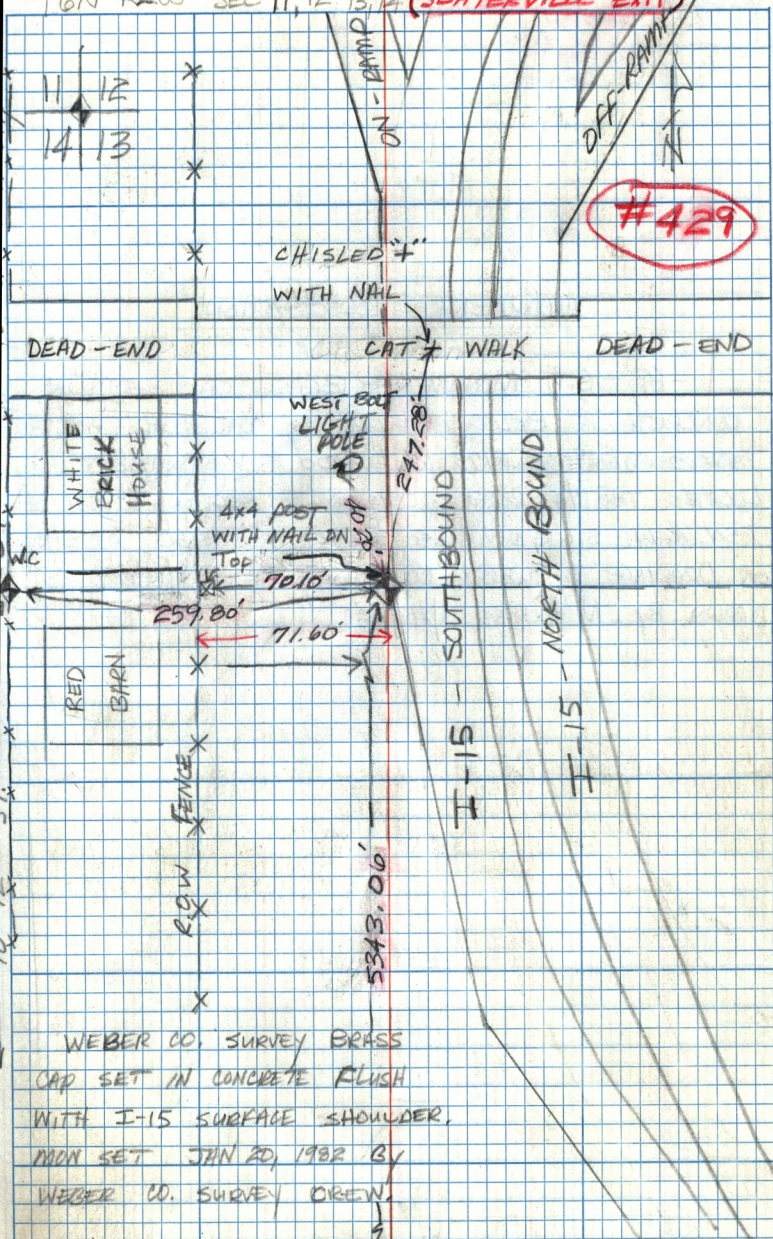


MC-52

22 JAN 82
M. HOLMES
W. WALKER
M. ALLEN

(16)

T6N R2W SEC 11, 12, 13, 14 (SLATERVILLE EXIT)



WEBER CO. SURVEY BRASS
 CAP SET IN CONCRETE FLUSH
 WITH I-15 SURFACE SHOULDER.
 MON SET JAN 20, 1982 BY
 WEBER CO. SURVEY CREW.

14 13
 23 24